

Reservation Policies

Eligibility • Check-in/Check-out

A valid DoD ID card or service connected VHIC card is mandatory to make reservations and to show at check-in.

Total payment is due upon check-in.

No refund for early check-out without official orders or doctor's written verification.

Late check-outs are not allowed.

Online Reservations

Authorized persons may book accommodations online at sjfss.com/blakeslee.

Reservations made outside priority timeframe will be canceled. Same day reservations must be made before 4 p.m.

Reservations are made by room type only; specific accommodations are not guaranteed.

Group reservations are welcomed during nonpeak season, 1 November–31 March.

Cancellations

You must call 910-500-6465 more than seven days prior to arrival date to avoid a cancellation penalty of one night's fee per accommodation.

Sponsor Information

Sponsors must stay on site for the full reservation.

Military dependents with valid DoD IDs: Minors under the age of 18 must be accompanied by an adult and have a note from their military sponsor. Between 18-20 years, a note from the military sponsor is required. There are no restrictions for ages 21 and up.

Reservation Priority

12 months in advance

E1-E4 Airmen and their family members assigned to/supported by SJAFB

6 months in advance

Active duty uniformed members and their family members assigned to/supported by SJAFB

5 months in advance

Active duty uniformed members and their family members not assigned to/supported by SJAFB

4 months in advance

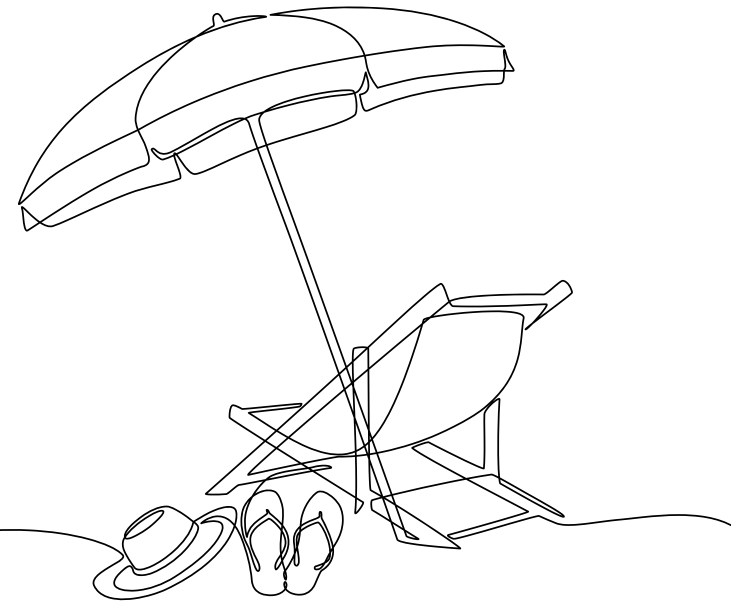
Service retirees and their family members retired from active duty or Reserve, and honorably discharged veterans of the uniformed services

3 months in advance

All other authorized patrons outlined in DAFI34-101, Table A2.1, Categories 5-14

2 months in advance

All other authorized patrons outlined in DAFI34-101, Table A2.2, Categories 15-29



www.sjfss.com/blakeslee
fb.com/blakesleeafra

Revised 29 June 2023

118 Riverfront Road
Kure Beach, NC 28449
910-500-6465

Your Place at the Beach

When you make Blakeslee Air Force Recreation Area (BAFRA) your coastal vacation destination, you'll discover the perfect setting for you to relax and reconnect with family and friends. Located within an easy 30-minute drive from Historic Wilmington, Kure Beach is steeped in history and natural beauty. Vacationers delight in the best of both worlds—the charm and serenity of a small seaside town with an abundance of activities.

It's no surprise that BAFRA has been called "the military's best kept secret." Offering cottages, lodge rooms, recreational vehicle sites and tent camping, BAFRA is designed for the enjoyment of military members, their families, retirees and all other authorized DoD customers.

More reasons to choose Blakeslee

Cottages

- Four-bedroom cottages—Sleep up to eight guests; two queen rooms, two twin rooms
- Three-bedroom cottages—Sleep up to six guests; two queen size beds, two twins
- One bedroom cottages—Sleep up to two guests in a queen size bed

Lodge Rooms

- Sleep up to two guests in a full size bed. Restroom is shared with adjacent room.

Blakeslee's accommodations are all 100% smoke-free.

Washers and dryers are provided in three and four bedroom cottages. Coin operated machines are available on site.

BAFRA has a limited number of accessible cottages as well as bathhouses.

Authorized guests of BAFRA enjoy convenient beach access with free parking, a riverside fishing pier and shallow draft boat launch.

Other on-site features include basketball and volleyball courts.

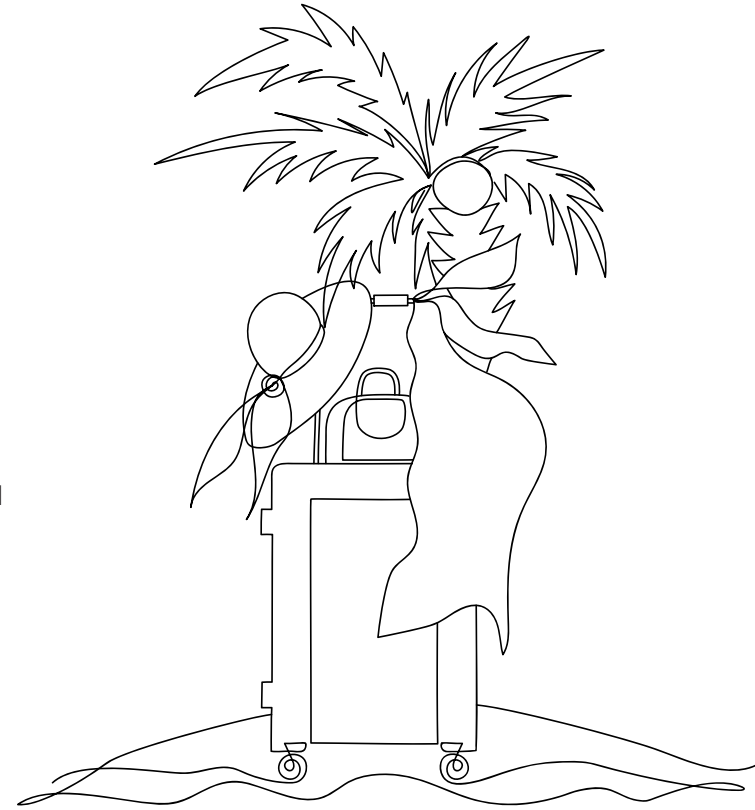
Ask about our programs. BAFRA offers daily activities between Memorial Day and Labor Day weekends. Follow us on Facebook or check out our web page for special events and programs throughout the year.

Camping

- Full hookup and overflow sites for recreational vehicles
- Tent camping sites, primitive; no reservation necessary

Pet friendly

- Pet friendly accommodations available by reservation only
- Climate controlled pet kennels with doggy door and access to larger play area



Reception Center • Gift Shop • Equipment Rental

Make the Reception Center your first stop upon arrival to BAFRA. This is the hub for guest check-in/check-out, reservations, etc. The gift shop has an array of souvenirs and sundries. Equipment Rental carries a variety of kayaks, canoes, bikes, surfboards, paddleboards, fishing tackle, tent camping gear and more for customer convenience.

Recreation Hall

The Recreation Hall offers pool table, ping pong, video games, board games, book exchange, craft room and outdoor pool (seasonal).